

### Construction:

Body Material	Cast Steel, ASTM A-216 WCB
Bonnet Material	Cast Steel, ASTM A-216 WCB
Bolting	ASTM A193 - B7
Design Construction	API 599
Hydrostatic Testing	4000 psig (27.57 MPa) @ 5 minutes

### Ratings:

Cold Working Pressure	1000 psig (6.9 MPa)
Max. Metal temp.	500 deg.F (260 deg.C)
Test Outlet Cv (gpm)	290
Group Outlet Cv (gpm)	423
Max. Differential Seal Press.	400 psid (2757 kPad) [internal or external]

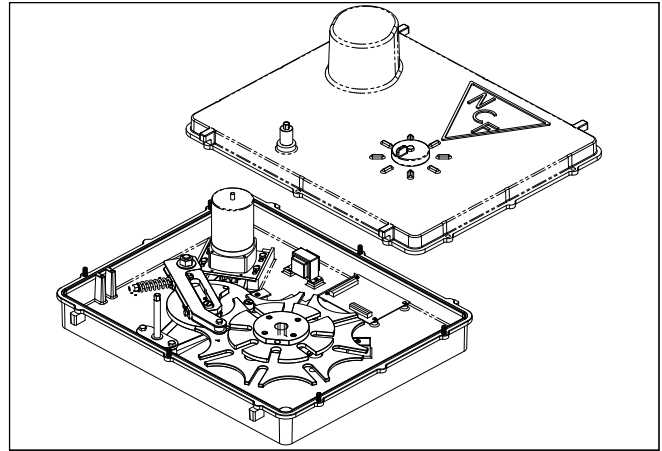
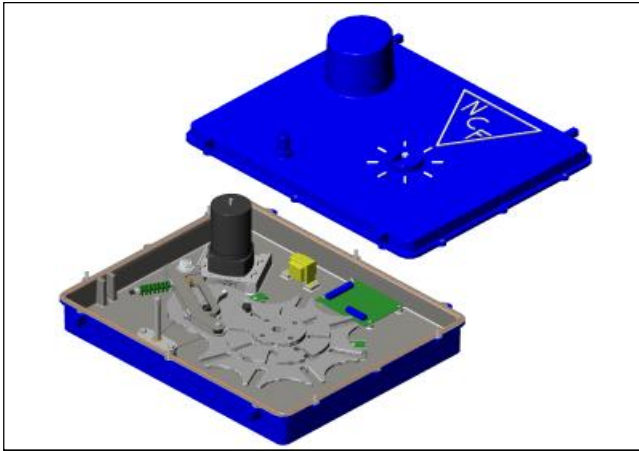
### Configuration:

Number of Inlets	8
Inlet Size	2-inch NPT
Group Outlet Size	4-inch NPT
Test Outlet Size	2-inch NPT

### Properties:

Plug Position Tolerance	+ / - 1/2 Deg.
Allowable ANSI Leakage	Less than 0.001% of Cv
Rotor Torque (retracted seal)	36-60 in-lbf (4-7 N-M)
Seal Material	Viton / Teflon Composite
Weight	145 lbs (320 kg)

Aug 2014  
F-4101



**Construction:**

Enclosure Material  
 Drive Components Material  
 Weatherproof Seals

Cast Aluminum, 319-T5  
 Cast Aluminum, 319-T5  
 O-ring seals at all surfaces excluding threads

**Ratings:**

Service Temp.  
 Sealed Enclosure Housing  
 F.M. Approved

32 to 158 deg.F (0 to 70 deg.C)  
 NEMA 4  
 Class I, Div 2, Hazardous Locations  
 Groups A-D, Temp. Service T3  
 [Ex IIB-C N T3]

CENELEC Approval

**Electrical:**

**AC Power System**

Motor Type  
 Motor Power  
 Motor Shaft Speed  
 Output Shaft Speed  
 Output Shaft Torque

60 W Permanent Split Capacitor-Start  
 115 Volts AC, 1/2 AMP, 60 Hz, Single Phase  
 1750 RPM  
 16.7 RPM  
 100 in-lbf (11.3 N-M)

**Discrete Position Control:**

Motor (ON/OFF) Control  
  
 Position Control Signal

[24 VDC @ 24mA DPDT Relay] or  
 [115 VAC @ 0.5A Direct Control]  
 (DPDT Relay) [1.0A @ 30Vdc] [0.3A @ 60Vdc]  
 [0.5A @ 125VAC]

**Digital Position Control:**

Interface Standards  
 Protocol Standards  
 Power Connections

RS-232 / RS-485  
 ASCII (3-Wire) or Modbus<sup>TM</sup> RS-485 RTU (2-Wire)  
 2-OFF, 3/4-inch NPT or 25mm (customer specified)

**Physical Properties:**

Weight  
 Size (LxWxH)

100 lbs (221 kgs)  
 27 x 22 x 10 inches (686 x 559 x 254 mm)

Aug 2014  
 F-4101